

## FLOORFINDER

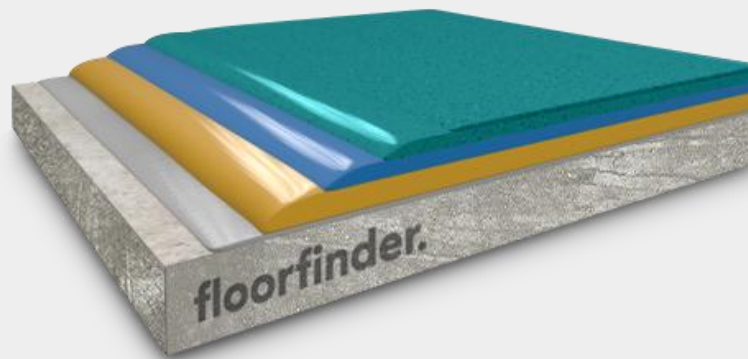
### ELASTIC SKY soft

Decorative and elastic polyurethane coating system, very good UV- and colour stable, with impact noise reducing intermediate layer, gentle to knees and joints, temperature pleasing to the feet, with light to medium mechanical and chemical resistance and a wide colour spectrum.

#### Application Fields

- Schools
- Nursing home
- Foyers
- Hospitales
- Restaurants
- Exhibition areas
- Private apartments
- Public buildings

## SYSTEM BUILD UP



FLOORFINDER  
PU-L325

ELASTIC  
LAYER



FLOORFINDER  
PU-C525

PORE  
SEALER



FLOORFINDER  
EP-T703

PRIMER



FLOORFINDER  
PU-S6000

SEALER



FLOORFINDER  
PU-C500 SKY

DECORATIVE  
COATING



FLOORFINDER  
PU-C525

BASE  
LAYER



## SYSTEM HIGHLIGHTS

4.0 – 8.0 mm System thickness



Impact sound  
reducing up to  
12 dB



Suitable for  
underfloor  
heating



Gentle to  
knees and  
joints



Hygienic



Abrasion  
resistant and  
suitable for  
chair castor



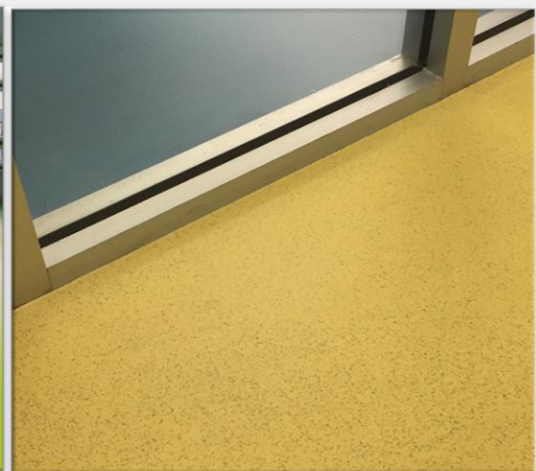
Very high  
colour and UV  
stability



Low emission  
tested



Easy to clean



## FLOORFINDER *ELASTIC SKY soft*

### Application and Consumption

Layer	Product	Consumption (kg/m <sup>2</sup> )	Sand broadcasting (kg/m <sup>2</sup> )	Thickness (mm)	Application
Sealer flexible, transparent, matt	FLOORFINDER PU-S6000	0.12 – 0.14	none	0,11 – 0,13	roller or rubber squeegee and roller
Decorative, self-levelling coating, UV- and colour stable	FLOORFINDER PU-C500 SKY 20	2.0 -2.5	none	2.0 -2.2	notched trowel
Base layer	FLOORFINDER PU-C525	1.0 – 2.5	-	0.8 – 2.0	notched trowel
Highly elastic intermediate layer	FLOORFINDER PU-L325	2.0 -6.0	-	2.0 – 6.0	notched rubber squeegee or notched trowel
(optional) Levelling layer	FLOORFINDER PU-C525	0.6 – 1.0	-	ca. 0.5	notched trowel
Primer	FLOORFINDER EP-T703 or others	ca. 0.4	QS 0.3 – 0.8 mm ca. 0.5	ca. 0.3	roller or rubber squeegee
Substrate	Cementitious substrates according to the appropriate standards and approvals must be capable of bearing loads and be free of cracks and voids. Pull-off strength $\geq 1.5$ N/mm <sup>2</sup> , residual moisture content $< 4$ %-CM, with higher residual moisture and on substrates with moisture from the backside special measures must be taken or a damp proof membrane must be installed. Substrate preparation e.g. grinding or shot blasting, sweeping and vacuum-cleaning is mandatory. Consumptions are calculated with FLOORFINDER quartz sands and fillers. Usage of other quartz sands and fillers can cause changes of consumption and technical data.				
Note	Detailed application instructions are available upon request or refer to the technical product data sheet.				

### Technical Data



Property	Standard	Result
Tensile strength (top coating)	DIN 53504	ca. 9 N/mm <sup>2</sup>
Elongation at break (top coating)	DIN 53504	ca. 60 %
Tear resistance	DIN 53515	ca. 12 N/mm <sup>2</sup>
Shore-Hardness	DIN ISO 868	80 A nach 28 d
Way to use	In Relation to DIN EN 685	Private buildings: 23 Public buildings 34
Impact sound reduction	DIN 4109	ca. 8 – 12 dB
Impact strength	DIN EN 13813	$\geq 4$ Nm (IR4)
Wear resistance (Taber)	ISO 9352, ASTM D 1044	$\leq 80$ mg
Anti-skid properties	BGR 181 / DIN 51130	Class R9
Adhesive strength	DIN ISO 4624	$>1,5$ N/mm <sup>2</sup>
Fire behaviour class system	EN 13501-1	Bfl-s1

Remark: for further information please refer to the product data sheets or contact our technical service. All data are approximate values. Therefore, no liability claims can be derived from the system data sheet. As all FLOORFINDER data sheets are updated on a regular basis it is the user's responsibility to obtain the most recent issue (see [www.floorfinder.com.my](http://www.floorfinder.com.my) or contact us directly)– all technical information is subject to change without prior notice. FLOORFINDER products are guaranteed against defective material and manufacture and are sold subject to its standard Terms and Conditions of Sale, copies which can be obtained on request.

#### Manufacturer:

FLOORFINDER ASIA SDN. BHD. – A division of VIACOR VISION AG, SWITZERLAND | No. 28, Lorong Sungai Puloh 1A/KU6 | Jalan Sungai Puloh | Batu 5 3/4 Kapar | 42100 Klang | Selangor Darul Ehsan | Malaysia | Tel: +603 3290 7644 | [info@floorfinderasia.com](mailto:info@floorfinderasia.com) | [www.floorfinderasia.com](http://www.floorfinderasia.com)