

FLOORFINDER *EXPRESS urea*

Fast- and low-temperature-curing polyurea coating, for light to medium chemical and medium mechanical loads with a wide color spectrum, a particularly thin system build and a smooth surface.

Application Fields

Technical rooms

Storerooms

Subordinate industrial areas

SYSTEM BUILD UP



SYSTEM HIGHLIGHTS

0.5 – 1.2 mm System thickness



UV and colour stable



Application and curing within a day, early water resistance after 3h



Low temperature curing – applicable from 5°C



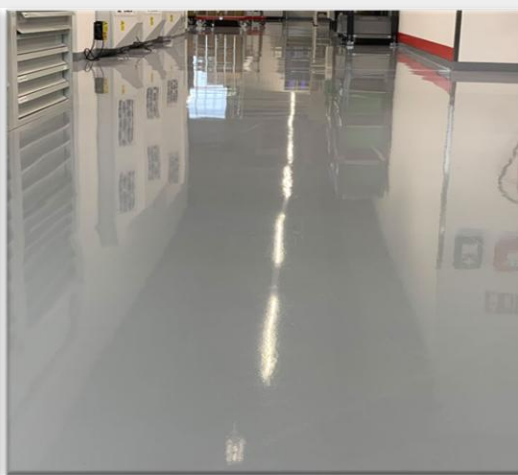
Solvent free, low odor



Available in many colours



Certified low flammable

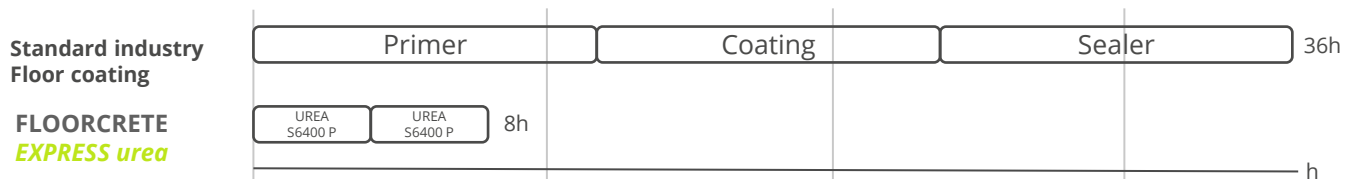


FLOORFINDER *EXPRESS urea*

Application and Consumption

Layer	Product	Consumption (kg/m ²)	Sand broadcasting (kg/m ²)	Thickness (mm)	Application
Pigmented Sealer	FLOORFINDER UREA S6400 P	0.4 – 1.0	-	0.3 – 0.8	notched trowel, rubber squeegee, roller
Primer	FLOORFINDER UREA S6400 P	0.3 – 0.8	-	0.2 – 0.6	rubber squeegee, roller
Substrate	Cementitious substrates according to the appropriate standards and approvals must be capable of bearing loads and be free of cracks and voids. Pull-off strength ≥ 1.5 N/mm ² , residual moisture content < 4 %-CM, with higher residual moisture and on substrates with moisture from the backside special measures must be taken or a damp proof membrane must be installed. Substrate preparation e.g. grinding or shot blasting, sweeping and vacuum-cleaning is mandatory. Consumptions are calculated with FLOORFINDER quartz sands and fillers. Usage of other quartz sands and fillers can cause changes of consumption and technical data.				
Note	Detailed application instructions are available upon request or refer to the technical product data sheet.				

System timeline (Assumed application conditions: 15°C, 40% rel. Humidity, 200m² area, ca.1h application per operation)



Technical Data



Property	Standard	Result
Shore-Hardness	DIN EN ISO 868	After 1d: D65 After 7d: D75
Adhesive tensile strength	DIN EN ISO 4624	$\geq 2,5$ N/mm ² (concrete failure)
Impact strength	EN 13813, tested acc. EN ISO 6272-1	\geq IR4
Abrasion resistance (Taber)	DIN ISO 9352	≤ 500 mg (H22, 1000 cycles)
Chemical resistance	EN ISO 2812-4	Resistant against (among others): -Petrol (DIBt medium group 1) -Diesel/Heating oil (3) -Sulfuric acid 20% (10) -Detergent 50% (14)

Remark: for further information please refer to the product data sheets or contact our technical service. All data are approximate values. Therefore, no liability claims can be derived from the system data sheet. As all FLOORFINDER data sheets are updated on a regular basis it is the user's responsibility to obtain the most recent issue (see www.floorfinder.com.my or contact us directly)– all technical information is subject to change without prior notice. FLOORFINDER products are guaranteed against defective material and manufacture and are sold subject to its standard Terms and Conditions of Sale, copies which can be obtained on request.

Manufacturer:

FLOORFINDER ASIA SDN. BHD. – A division of VIACOR VISION AG, SWITZERLAND | No. 28, Lorong Sungai Puloh 1A/KU6 | Jalan Sungai Puloh | Batu 5 3/4 Kapar | 42100 Klang | Selangor Darul Ehsan | Malaysia | Tel: +603 3290 7644 | info@floorfinderasia.com | www.floorfinderasia.com