

## FLOORFINDER UNIVERSAL

Versatile epoxy resin based coating system, for medium to high mechanical and medium chemical loads, with a wide spectrum of colours and surface structures.

### Application Fields

Logistic sites

Warehouses

Production areas

Paper mills

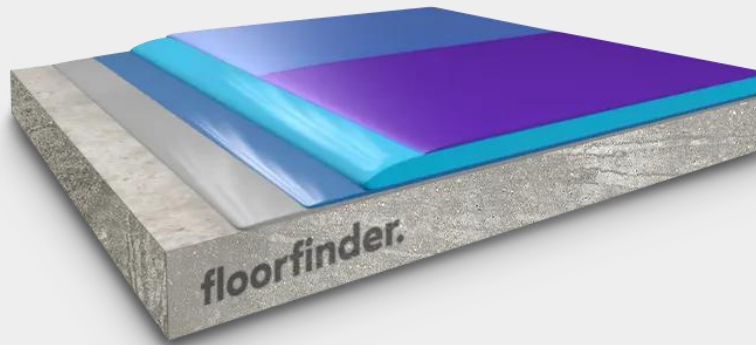
Workshops

Shopping malls

Supermarkets

Laboratories

## SYSTEM BUILD UP



### FLOORFINDER

EP-C500

SCRATCH  
COAT



### FLOORFINDER

EP-T703

PRIMER



### FLOORFINDER

PU-S6005P

OPTIONAL  
SEALER



### FLOORFINDER

EP-C500

SELF-  
LEVELLING  
COATING



## SYSTEM HIGHLIGHTS

2.0 – 5.0 mm System thickness



High abrasion  
resistance



High gloss  
finishing



Low emission  
acc. AgBB and  
other  
standards



Hygienic  
easy to clean



High chemical  
resistance



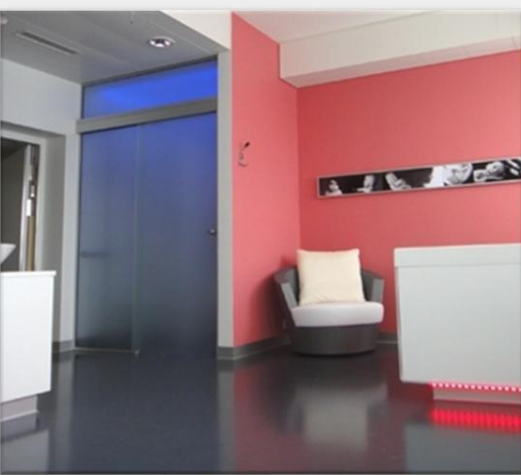
Diverse colours  
available



Optionally slip  
resistance  
R9/R10/R11



Capable of  
bearing load



## FLOORFINDER **UNIVERSAL**

### Application and Consumption

Layer	Product	Consumption (kg/m <sup>2</sup> )	Sand broadcasting (kg/m <sup>2</sup> )	Thickness (mm)	Application
Optional: Sealer, matt, coloured	FLOORFINDER PU-S6005 P	0.10 – 0.13	-	0.08 – 0.1	microfibre roller
Alternative: Sealer, matt, transparent	FLOORFINDER PU-S6005				
Self-levelling coating	FLOORFINDER EP-C500	1.6 – 3.0	Optional Colour chips	1.2 – 2.0	notched trowel or squeegee (+ spike roller)
Alternativ: Self-levelling coating, highly fillable	FLOORFINDER EP-C3005 (fillable 60-63% with FLOORFINDER QNV0)	1.7 – 2.1		1.0 – 1.2	
Scratch coat, levelling layer	FLOORFINDER EP-C500 (fillable 10-20% with FLOORFINDER QNV0)	0.8 – 2.0 (0.08 – 0.4 QNV0)	-	0.5 – 2.0	trowel or rubber squeegee / notched trowel or notched squeegee
Alternative: Scratch coat, highly fillable	FLOORFINDER EP-C3005 (fillable 70-150% with FLOORFINDER QNV0)	0.6 – 1.2 (0.4 – 1.8 QNV0)			
Primer	FLOORFINDER EP-T703 or FLOORFINDER EP-P210	0.3 – 0.5	Optional QS (0.3-0.8 mm) Ca. 0.5	0.2 – 0.3	rubber squeegee, roller
Substrate	Cementitious substrates according to the appropriate standards and approvals must be capable of bearing loads and be free of cracks and voids. Pull-off strength $\geq 1.5$ N/mm <sup>2</sup> , residual moisture content $< 4$ %-CM, with higher residual moisture and on substrates with moisture from the backside special measures must be taken or a damp proof membrane must be installed. Substrate preparation e.g. grinding or shot blasting, sweeping and vacuum-cleaning is mandatory. Consumptions are calculated with FLOORFINDER quartz sands and fillers. Usage of other quartz sands and fillers can cause changes of consumption and technical data.				
Note	Detailed application instructions are available upon request or refer to the technical product data sheet. Transparent top coats can't avoid yellowing of layer below.				

### Technical Data

Property	Standard	Result
Compressive strength	EN 196 / ASTM C109	ca. 70 N/mm <sup>2</sup>
Flexural strength	EN 196 / ASTM C109	ca. 40 N/mm <sup>2</sup>
E-Modulus	DIN 53504	ca. 7000 N/mm <sup>2</sup>
Shore-Hardness	EN ISO 868	D 82 after 28 d
Adhesive strength	EN ISO 4624	$> 2,5$ N/mm <sup>2</sup> (concrete failure)
Impact strength	EN 13813	$\geq 4$ Nm (IR4)
Wear resistance (Taber)	EN ISO 5470-1	$\leq 55$ mg
Chemical resistance	EN ISO 2812-1	Test liquids 3, 10, 11 (more upon request)
Solvent free / Total solid	Test method „Deutsche Bauchemie“	$\leq 1$ % (not valid for water based seal coat)
Fire resistance	DIN EN 13501-1	B <sub>f1</sub> -s1
Slip resistance	DIN 51130	R9 – R10

Remark: for further information please refer to the product data sheets or contact our technical service. All data are approximate values. Therefore, no liability claims can be derived from the system data sheet. As all FLOORFINDER data sheets are updated on a regular basis it is the user's responsibility to obtain the most recent issue (see [www.floorfinder.com.my](http://www.floorfinder.com.my) or contact us directly)– all technical information is subject to change without prior notice. FLOORFINDER products are guaranteed against defective material and manufacture and are sold subject to its standard Terms and Conditions of Sale, copies which can be obtained on request.

#### Manufacturer:

FLOORFINDER ASIA SDN. BHD. – A division of VIACOR VISION AG, SWITZERLAND | No. 28, Lorong Sungai Puloh 1A/KU6 | Jalan Sungai Puloh | Batu 5 3/4 Kapar | 42100 Klang | Selangor Darul Ehsan | Malaysia | Tel: +603 3290 7644 | [info@floorfinderasia.com](mailto:info@floorfinderasia.com) | [www.floorfinderasia.com](http://www.floorfinderasia.com)